



UNDERWEAR | SOCKS | AW22  
TOPLINE & BASICLINE





O'Neill, the original Californian surf, snow and life style brand, was founded in 1952 when a young man named Jack O'Neill took his unstoppable passion for surfing and used it to beat mother nature at its own game. Although many things have changed since the humble beginnings, is Jack's first vision of the production of functional and innovative board riding products always exist to inspire people and bring them to what they prefer to do. Connect seamlessly to our underwear collections here.

Welcome to O'Neill.



The Better Cotton Initiative exists to make global cotton production better for the people who produce it, better for the environment it grows in and better for the sector's future, by developing Better Cotton as a sustainable mainstream commodity.

The Better Cotton Growth and Innovation Fund is a global programme designed to support the Better Cotton Initiative in its goals of reaching five million farmers in key cotton producing countries and have Better Cotton account for 30% of global cotton production. Launched by BCI and its partners in 2016, the Fund identifies, supports and invests in field-level programmes and innovation while fostering adoption of the Better Cotton Standard System by governments and other national entities.

Be part of something Better.







**809021  
WOMEN RACERBACK TOP PLAIN  
NOS**

1000 White  
1-PACK  
S, M, L, XL  
95% BCI Cotton, 5% Elastane



**809001  
WOMEN SHORT TOP PLAIN  
NOS**

1000 White  
1-PACK  
S, M, L, XL  
95% BCI Cotton, 5% Elastane



**809021  
WOMEN RACERBACK TOP PLAIN  
NOS**

6900 Black  
1-PACK  
S, M, L, XL  
95% BCI Cotton, 5% Elastane



**809001  
WOMEN SHORT TOP PLAIN  
NOS**

6900 Black  
1-PACK  
S, M, L, XL  
95% BCI Cotton, 5% Elastane



**809031  
WOMEN RACERBACK TOP PLAIN  
SEASON**

5500 Peach  
1-PACK  
S, M, L, XL  
95% BCI Cotton, 5% Elastane



**809011  
WOMEN SHORT TOP PLAIN  
SEASON**

5210 Fucshia  
1-PACK  
S, M, L, XL  
95% BCI Cotton, 5% Elastane



**809031  
WOMEN RACERBACK TOP PLAIN  
SEASON**

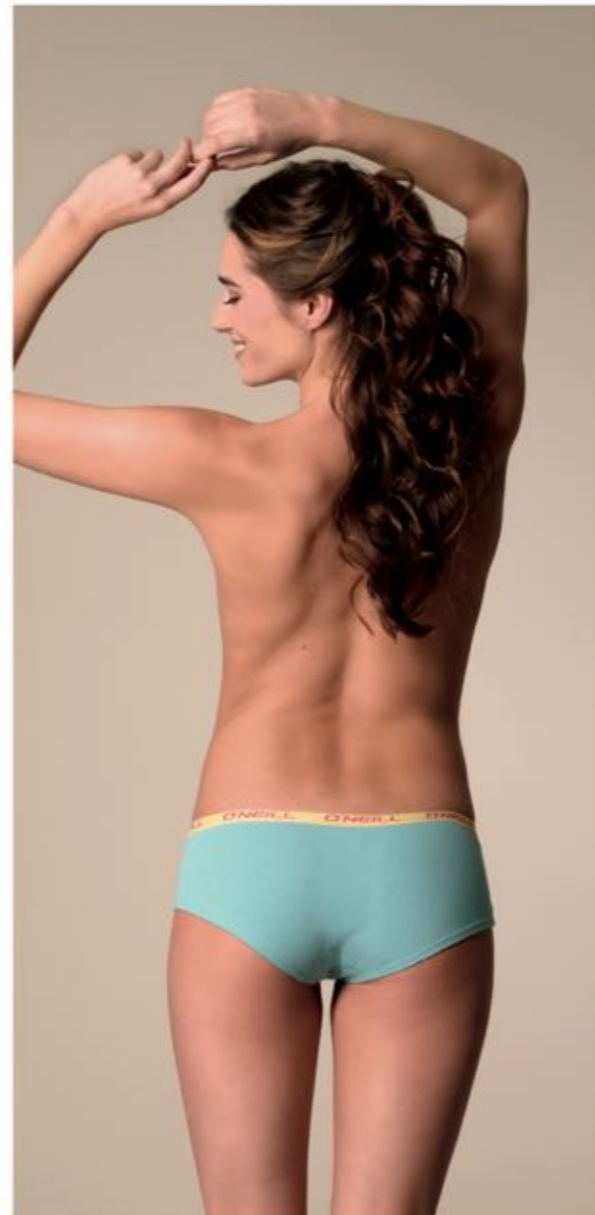
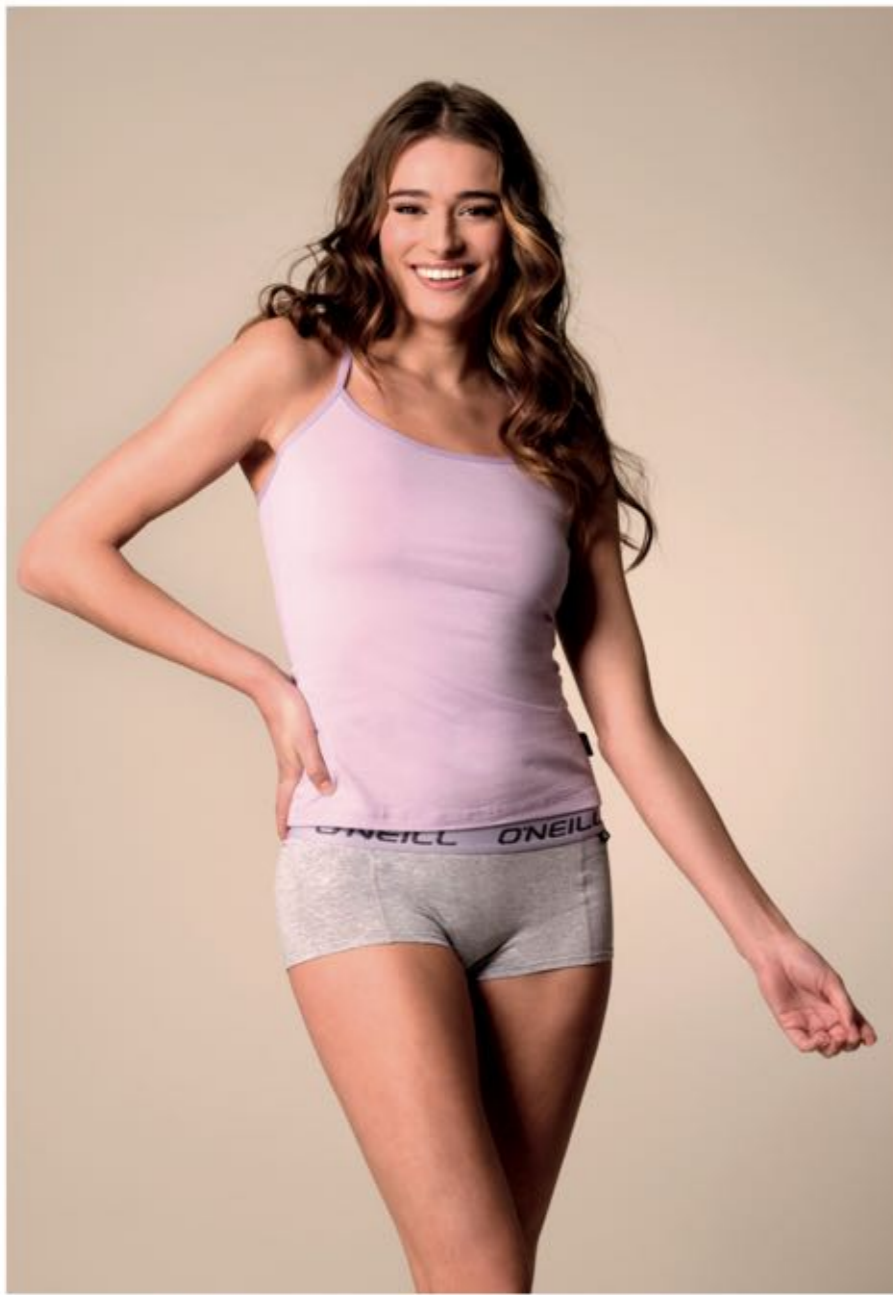
5400 Purple  
1-PACK  
S, M, L, XL  
95% BCI Cotton, 5% Elastane



**809011  
WOMEN SHORT TOP PLAIN  
SEASON**

4111 Aqua Sea  
1-PACK  
S, M, L, XL  
95% BCI Cotton, 5% Elastane





**802032**  
WOMEN BIKINI PLAIN  
NOS  
1010 White  
2-PACK  
S, M, L, XL  
95% BCI Cotton, 5% Elastane



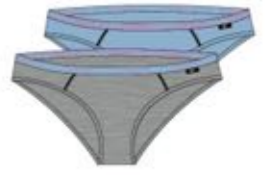
**802032**  
WOMEN BIKINI PLAIN  
NOS  
6969 Black  
2-PACK  
S, M, L, XL  
95% BCI Cotton, 5% Elastane



**802052**  
WOMEN BIKINI PLAIN  
SEASON  
7003 Nocturne/Peach  
2-PACK  
S, M, L, XL  
95% BCI Cotton, 5% Elastane



**802052**  
WOMEN BIKINI PLAIN  
SEASON  
7004 Fuchsia/Lime  
2-PACK  
S, M, L, XL  
95% BCI Cotton, 5% Elastane



**802052**  
WOMEN BIKINI PLAIN  
SEASON  
7005 Grey Mel/Blue  
2-PACK  
S, M, L, XL  
95% BCI Cotton, 5% Elastane



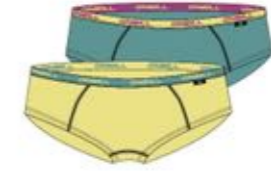
**801022**  
WOMEN HIPSTER PLAIN  
NOS  
1010 White  
2-PACK  
S, M, L, XL  
95% BCI Cotton, 5% Elastane



**801022**  
WOMEN HIPSTER PLAIN  
NOS  
6969 Black  
2-PACK  
S, M, L, XL  
95% BCI Cotton, 5% Elastane



**801042**  
WOMEN HIPSTER PLAIN  
SEASON  
7003 Nocturne/Peach  
2-PACK  
S, M, L, XL  
95% BCI Cotton, 5% Elastane



**801042**  
WOMEN HIPSTER PLAIN  
SEASON  
7004 Lime/Aqua Sea  
2-PACK  
S, M, L, XL  
95% BCI Cotton, 5% Elastane



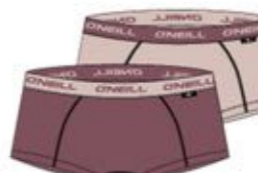
**801042**  
WOMEN HIPSTER PLAIN  
SEASON  
7005 Purple/Blue  
2-PACK  
S, M, L, XL  
95% BCI Cotton, 5% Elastane



**800002**  
WOMEN SHORTY PLAIN  
NOS  
1010 White  
2-PACK  
S, M, L, XL  
95% BCI Cotton, 5% Elastane



**800002**  
WOMEN SHORTY PLAIN  
NOS  
6969 Black  
2-PACK  
S, M, L, XL  
95% BCI Cotton, 5% Elastane



**800012**  
WOMEN SHORTY PLAIN  
SEASON  
7003 Nocturne/Peach  
2-PACK  
S, M, L, XL  
95% BCI Cotton, 5% Elastane



**800012**  
WOMEN SHORTY PLAIN  
SEASON  
7004 Fuchsia/Aqua Sea  
2-PACK  
S, M, L, XL  
95% BCI Cotton, 5% Elastane



**800012**  
WOMEN SHORTY PLAIN  
SEASON  
7005 Purple/Grey Mel  
2-PACK  
S, M, L, XL  
95% BCI Cotton, 5% Elastane





UNDERWEAR WOMEN NEW BRAZILIAN BRIEF AW22 O'NEILL



**803002**  
**WOMEN BRAZILIAN**  
**NOS**  
1010 White  
2-PACK  
S, M, L, XL  
95% BCI Cotton, 5% Elastane



**803002**  
**WOMEN BRAZILIAN**  
**NOS**  
6969 Black  
2-PACK  
S, M, L, XL  
95% BCI Cotton, 5% Elastane



**803012**  
**WOMEN BRAZILIAN**  
**SEASON**  
7003 Nocturne/Peach  
2-PACK  
S, M, L, XL  
95% BCI Cotton, 5% Elastane



**803012**  
**WOMEN BRAZILIAN**  
**SEASON**  
7004 Fuchsia/Aqua Sea  
2-PACK  
S, M, L, XL  
95% BCI Cotton, 5% Elastane



**803012**  
**WOMEN BRAZILIAN**  
**SEASON**  
7005 Purple/Blue  
2-PACK  
S, M, L, XL  
95% BCI Cotton, 5% Elastane

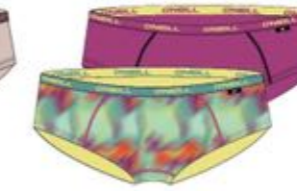
UNDERWEAR WOMEN REGULAR AW22 O'NEILL



**801782**  
**WOMEN HIPSTER**  
**SURFER**  
**SEASON**  
7000 Multi Surfer/Nocturne  
2-PACK  
S, M, L, XL  
95% BCI Cotton, 5% Elastane



**801752**  
**WOMEN HIPSTER**  
**FLORAL**  
**SEASON**  
7000 Multi Floral/Peach  
2-PACK  
S, M, L, XL  
95% BCI Cotton, 5% Elastane



**801762**  
**WOMEN HIPSTER**  
**BLEND**  
**SEASON**  
7000 Multi Blend/Fuchsia  
2-PACK  
S, M, L, XL  
95% BCI Cotton, 5% Elastane



**801792**  
**WOMEN HIPSTER**  
**TIE DYE**  
**SEASON**  
7000 Fuchsia/Purple  
2-PACK  
S, M, L, XL  
95% BCI Cotton, 5% Elastane



**800782**  
**WOMEN SHORTY**  
**SURFER**  
**SEASON**  
7000 Multi Surfer/Peach  
2-PACK  
S, M, L, XL  
95% BCI Cotton, 5% Elastane



**800752**  
**WOMEN SHORTY**  
**FLORAL**  
**SEASON**  
7000 Multi Floral/Nocturne  
2-PACK  
S, M, L, XL  
95% BCI Cotton, 5% Elastane



**800672**  
**WOMEN SHORTY**  
**BLEND**  
**SEASON**  
7000 Multi Blended/Fuchsia  
2-PACK  
S, M, L, XL  
95% BCI Cotton, 5% Elastane



**800792**  
**WOMEN SHORTY**  
**TIE DYE**  
**SEASON**  
7000 Fuchsia/Purple  
2-PACK  
S, M, L, XL  
95% BCI Cotton, 5% Elastane





**900002  
MEN BOXER PLAIN  
NOS**

4349 Blue Mel/Marine  
2-PACK  
S, M, L, XL, XXL  
95% BCI Cotton, 5% Elastane



**900002  
MEN BOXER PLAIN  
NOS**

6868 Anthracite Mel  
2-PACK  
S, M, L, XL, XXL  
95% BCI Cotton, 5% Elastane



**900002  
MEN BOXER PLAIN  
NOS**

6969 Black  
2-PACK  
S, M, L, XL, XXL  
95% BCI Cotton, 5% Elastane



**900012  
MEN BOXER UNI  
SEASON**

7004 Orange/Harbor Blue  
2-PACK  
S, M, L, XL, XXL  
95% BCI Cotton, 5% Elastane



**900012  
MEN BOXER UNI  
SEASON**

7005 Deep Teal/Cobalt  
2-PACK  
S, M, L, XL, XXL  
95% BCI Cotton, 5% Elastane



**900012  
MEN BOXER UNI  
SEASON**

7006 Marine/Red  
2-PACK  
S, M, L, XL, XXL  
95% BCI Cotton, 5% Elastane



**900012  
MEN BOXER UNI  
SEASON**

7007 Nocturne/Balsam Green  
2-PACK  
S, M, L, XL, XXL  
95% BCI Cotton, 5% Elastane





**900892**  
**MEN BOXER**  
**ALL OVER LOGO**  
**SEASON**

7000 Multi All Over/Black  
 2-PACK  
 S, M, L, XL, XXL  
 95% BCI Cotton, 5% Elastane



**900902**  
**MEN BOXER**  
**ROUND LOGO**  
**SEASON**

7000 Multi Logo/M. Grey Mel  
 2-PACK  
 S, M, L, XL, XXL  
 95% BCI Cotton, 5% Elastane



**900912**  
**MEN BOXER**  
**SHARK**  
**SEASON**

7000 Multi Shark/Marine  
 2-PACK  
 S, M, L, XL, XXL  
 95% BCI Cotton, 5% Elastane



**900922**  
**MEN BOXER**  
**CAMOUFLAGE**  
**SEASON**

7000 Multi Camo/Balsam Green  
 2-PACK  
 S, M, L, XL, XXL  
 95% BCI Cotton, 5% Elastane



**900852**  
**MEN BOXER**  
**COMIC**  
**SEASON**

7000 Multi Comic/Black  
 2-PACK  
 S, M, L, XL, XXL  
 95% BCI Cotton, 5% Elastane



**900862**  
**MEN BOXER**  
**BLENDED DYE**  
**SEASON**

7000 Multi Blended/Harbor Blue  
 2-PACK  
 S, M, L, XL, XXL  
 95% BCI Cotton, 5% Elastane



**900872**  
**MEN BOXER**  
**PALM**  
**SEASON**

7000 Multi Palm/Cobalt  
 2-PACK  
 S, M, L, XL, XXL  
 95% BCI Cotton, 5% Elastane



**900882**  
**MEN BOXER**  
**SEA**  
**SEASON**

7000 Multi Sea/Deep Teal  
 2-PACK  
 S, M, L, XL, XXL  
 95% BCI Cotton, 5% Elastane





**900003**  
**MEN BOXER PLAIN**  
**NOS**  
4847 Navy/Cobalt  
3-PACK  
S, M, L, XL, XXL  
95% Cotton, 5% Elastane



**900003**  
**MEN BOXER PLAIN**  
**NOS**  
6569 Grey/Black  
3-PACK  
S, M, L, XL, XXL  
95% Cotton, 5% Elastane



**900003**  
**MEN BOXER PLAIN**  
**NOS**  
6969 Black  
3-PACK  
S, M, L, XL, XXL  
95% Cotton, 5% Elastane



**900113**  
**MEN BOXER UNI**  
**SEASON**  
7003 Red/Marine/Grey Mel  
S, M, L, XL, XXL  
95% Cotton, 5% Elastane



**900113**  
**MEN BOXER UNI**  
**SEASON**  
7004 Deep Teal/Harbor Blue/Cobalt  
3-PACK  
S, M, L, XL, XXL  
95% Cotton, 5% Elastane



**900113**  
**MEN BOXER UNI**  
**SEASON**  
7005 Black/Yellow/Balsam Green  
3-PACK  
S, M, L, XL, XXL  
95% Cotton, 5% Elastane





**900343  
MEN BOXER  
ROUND LOGO  
SEASON**

7000 Multi Logo/Yellow/Anthracite Mel  
3-PACK  
S, M, L, XL, XXL  
95% Cotton, 5% Elastane



**900353  
MEN BOXER  
SURFER  
SEASON**

7000 Marine/Red/Cobalt  
3-PACK  
S, M, L, XL, XXL  
95% Cotton, 5% Elastane



**900363  
MEN BOXER  
STRIPES  
SEASON**

7000 Multi Stripes/Marine/Deep Teal  
3-PACK  
S, M, L, XL, XXL  
95% Cotton, 5% Elastane



**900373  
MEN BOXER  
ALL OVER  
SEASON**

7000 Multi All Over/Blue Cobalt/Harbor  
3-PACK  
S, M, L, XL, XXL  
95% Cotton, 5% Elastane



**900383  
MEN BOXER  
CRISS CROSS  
SEASON**

7000 Multi Criss/Nocturne/Marine  
3-PACK  
S, M, L, XL, XXL  
95% Cotton, 5% Elastane



**900393  
MEN BOXER  
SHARK  
SEASON**

7000 Multi Shark/Orange/Anthracite Mel  
3-PACK  
S, M, L, XL, XXL  
95% Cotton, 5% Elastane



**900403  
MEN BOXER  
PALM  
SEASON**

7000 Multi Palm/Balsam Green/Marine  
3-PACK  
S, M, L, XL, XXL  
95% Cotton, 5% Elastane



**900413  
MEN BOXER  
CAMOUFLAGE  
SEASON**

7000 Multi Camo/Black/Balsam Green  
3-PACK  
S, M, L, XL, XXL  
95% Cotton, 5% Elastane



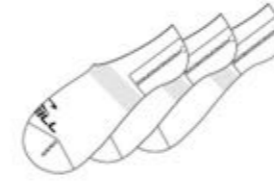


  
**O'NEILL**  
B L U E

**'THE OCEAN IS  
ALIVE AND WE  
HAVE TO TAKE  
CARE OF IT'**

- JACK O'NEILL





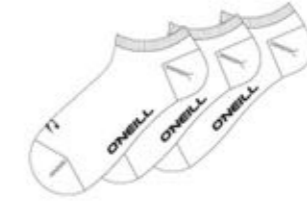
**719003  
FOOTIE PLAIN  
NOS**

1010 White  
3-PACK  
35/38, 39/42, 43/46  
75% Cotton, 23% Polyamide,  
2% Elastane



**719003  
FOOTIE PLAIN  
NOS**

6969 Black  
3-PACK  
35/38, 39/42, 43/46  
75% Cotton, 23% Polyamide,  
2% Elastane



**739003  
SNEAKER PLAIN  
NOS**

1010 White  
3-PACK  
35/38, 39/42, 43/46  
72% Cotton, 26% Polyamide,  
2% Elastane



**739003  
SNEAKER PLAIN  
NOS**

6969 Black  
3-PACK  
35/38, 39/42, 43/46  
72% Cotton, 26% Polyamide,  
2% Elastane



**739003  
SNEAKER PLAIN  
NOS**

7000 Grey/Anthracite/Black  
3-PACK  
35/38, 39/42, 43/46  
72% Cotton, 26% Polyamide,  
2% Elastane



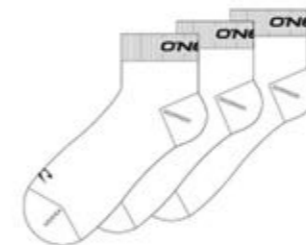
**739003  
SNEAKER PLAIN  
NOS**

7001 Marine/Jeans/Dark Jeans  
3-PACK  
35/38, 39/42, 43/46  
72% Cotton, 26% Polyamide,  
2% Elastane



**739003  
SNEAKER PLAIN  
NOS**

7002 Old Pink/White/Pink  
3-PACK  
35/38, 39/42  
72% Cotton, 26% Polyamide,  
2% Elastane



**759003  
QUARTER PLAIN  
NOS**

1010 White  
3-PACK  
35/38, 39/42, 43/46  
72% Cotton, 26% Polyamide,  
2% Elastane



**759003  
QUARTER PLAIN  
NOS**

6969 Black  
3-PACK  
35/38, 39/42, 43/46  
72% Cotton, 26% Polyamide,  
2% Elastane



**759003  
QUARTER PLAIN  
NOS**

7000 Grey/Anthracite/Black  
3-PACK  
35/38, 39/42, 43/46  
72% Cotton, 26% Polyamide,  
2% Elastane



**759003  
QUARTER PLAIN  
NOS**

7001 Marine/Jeans/Dark Jeans  
3-PACK  
35/38, 39/42, 43/46  
72% Cotton, 26% Polyamide,  
2% Elastane





**789142**  
**SOCK**  
**SEASON**

2969 Balsam Green/Black  
2-PACK  
39/42, 43/46  
75% Cotton, 23% Polyamide,  
2% Elastane



**789142**  
**SOCK**  
**SEASON**

6849 Anthracite/Marine  
2-PACK  
39/42, 43/46  
75% Cotton, 23% Polyamide,  
2% Elastane



**789152**  
**SOCK**  
**SEASON**

4848 Cobalt  
2-PACK  
39/42, 43/46  
75% Cotton, 23% Polyamide,  
2% Elastane



**789152**  
**SOCK**  
**SEASON**

6969 Black  
2-PACK  
39/42, 43/46  
75% Cotton, 23% Polyamide,  
2% Elastane



**789162**  
**SOCK**  
**SEASON**

7029 Multi Dye/Balsam Green  
2-PACK  
35/38, 39/42, 43/46  
75% Cotton, 23% Polyamide,  
2% Elastane



**789162**  
**SOCK**  
**SEASON**

7041 Multi Dye/Blue  
2-PACK  
35/38, 39/42, 43/46  
75% Cotton, 23% Polyamide,  
2% Elastane



**789162**  
**SOCK**  
**SEASON**

7065 Multi Dye/Grey  
2-PACK  
35/38, 39/42, 43/46  
75% Cotton, 23% Polyamide,  
2% Elastane





**770013  
SPORT SOCK  
SEASON**

7000 White/Pink/Lilac  
2-PACK  
35/38, 39/42  
67% Cotton, 31% Polyester,  
2% Elastane



**770012  
SPORT SOCK  
SEASON**

7001 Light Green/Blue/Yellow  
2-PACK  
35/38, 39/42  
67% Cotton, 31% Polyester,  
2% Elastane



**770012  
TIE DYE SPORT SOCK  
SEASON**

3010 Limelight  
2-PACK  
35/38, 39/42  
75% Cotton, 23% Polyester,  
2% Elastane



**770012  
TIE DYE SPORT SOCK  
SEASON**

4111 Aqua Sea  
2-PACK  
35/38, 39/42, 43/46  
75% Cotton, 23% Polyester,  
2% Elastane



**770012  
TIE DYE SPORT SOCK  
SEASON**

4900 Dark Blue  
2-PACK  
35/38, 39/42, 43/46  
75% Cotton, 23% Polyester,  
2% Elastane



**770012  
TIE DYE SPORT SOCK  
SEASON**

5210 Fuchsia  
2-PACK  
35/38, 39/42  
75% Cotton, 23% Polyester,  
2% Elastane



**770012  
TIE DYE SPORT SOCK  
SEASON**

5400 Purple  
2-PACK  
35/38, 39/42  
75% Cotton, 23% Polyester,  
2% Elastane



**770012  
TIE DYE SPORT SOCK  
SEASON**

6990 Black  
2-PACK  
35/38, 39/42, 43/46  
75% Cotton, 23% Polyester,  
2% Elastane





**772001  
HIKE SOCK  
SEASON**

1000 White  
1-PACK  
35/38, 39/42, 43/46  
44% Cotton, 37% Polyester,  
17% Polyamide, 2% Elastane



**772001  
HIKE SOCK  
SEASON**

6599 Grey Mel  
1-PACK  
35/38, 39/42, 43/46  
44% Cotton, 37% Polyester,  
17% Polyamide, 2% Elastane



**772001  
HIKE SOCK  
SEASON**

6900 Anthracite  
1-PACK  
35/38, 39/42, 43/46  
44% Cotton, 37% Polyester,  
17% Polyamide, 2% Elastane



**789031  
SKI SOCK  
SEASON**

4941 Marine/Blue  
1-PACK  
35/38, 39/42, 43/46  
50% Polypropylene, 20% Wool,  
18% Polyamide, 10% Acrylic, 2% Elastane



**789031  
SKI SOCK  
SEASON**

6929 Black/Green  
1-PACK  
35/38, 39/42, 43/46  
50% Polypropylene, 20% Wool,  
18% Polyamide, 10% Acrylic, 2% Elastane



**789031  
SKI SOCK  
SEASON**

6956 Black/Orange  
1-PACK  
35/38, 39/42, 43/46  
50% Polypropylene, 20% Wool,  
18% Polyamide, 10% Acrylic, 2% Elastane



**789922  
SKI SOCK  
SEASON**

7000 Balsem Green/Black  
2-PACK  
35/38, 39/42, 43/46  
40% Acrylic, 30% Polyamide, 28% Wool,  
2% Elastane



**789922  
SKI SOCK  
SEASON**

7001 Yellow/Black  
2-PACK  
35/38, 39/42, 43/46  
40% Acrylic, 30% Polyamide, 28% Wool,  
2% Elastane



**789922  
SKI SOCK  
SEASON**

7002 Black/Light Grey  
2-PACK  
35/38, 39/42, 43/46  
40% Acrylic, 30% Polyamide, 28% Wool,  
2% Elastane





**889031  
CHUNKY WOOL  
HOME SOCKS  
SEASON**

1100 Off White  
1-PACK  
35/38, 39/42  
45% Wool, 25% Polyamide, 17% Acrylic,  
10% Polyester, 3% Other Fibres



**889031  
CHUNKY WOOL  
HOME SOCKS  
SEASON**

6550 Grey  
1-PACK  
35/38, 39/42, 43/46  
45% Wool, 25% Polyamide, 17% Acrylic,  
10% Polyester, 3% Other Fibres



**889031  
CHUNKY WOOL  
HOME SOCKS  
SEASON**

5200 Pink  
1-PACK  
35/38, 39/42  
45% Wool, 25% Polyamide, 17% Acrylic,  
10% Polyester, 3% Other Fibres



**889031  
CHUNKY WOOL  
HOME SOCKS  
SEASON**

1900 Taupe  
1-PACK  
35/38, 39/42, 43/46  
45% Wool, 25% Polyamide, 17% Acrylic,  
10% Polyester, 3% Other Fibres



**889031  
CHUNKY WOOL  
HOME SOCKS  
SEASON**

4800 Cobalt  
1-PACK  
35/38, 39/42, 43/46  
45% Wool, 25% Polyamide, 17% Acrylic,  
10% Polyester, 3% Other Fibres

# TOPLINE

UNDERWEAR & SOCKS







**901002  
MEN BOXER UNI  
NOS**

4749 Cobalt/Marine  
2-PACK  
S, M, L, XL, XXL  
95% Cotton, 5% Elastane



**901002  
MEN BOXER UNI  
NOS**

4949 Marine  
2-PACK  
S, M, L, XL, XXL  
95% Cotton, 5% Elastane



**901002  
MEN BOXER UNI  
NOS**

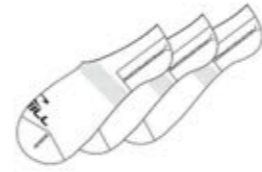
6869 Anthracite/Black  
2-PACK  
S, M, L, XL, XXL  
95% Cotton, 5% Elastane



**901002  
MEN BOXER UNI  
NOS**

6969 Black  
2-PACK  
S, M, L, XL, XXL  
95% Cotton, 5% Elastane





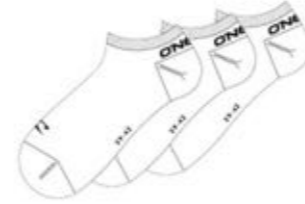
**710003  
FOOTIE  
NOS**

1010 White  
3-PACK  
35/38, 39/42, 43/46  
75% Cotton, 23% Polyamide,  
2% Elastane



**710003  
FOOTIE  
NOS**

6969 Black  
3-PACK  
35/38, 39/42, 43/46  
75% Cotton, 23% Polyamide,  
2% Elastane



**730003  
SNEAKER  
NOS**

1010 White  
3-PACK  
35/38, 39/42, 43/46  
72% Cotton, 26% Polyester,  
2% Elastane



**730003  
SNEAKER  
NOS**

4949 Marine  
3-PACK  
35/38, 39/42, 43/46  
72% Cotton, 26% Polyester,  
2% Elastane



**730003  
SNEAKER  
NOS**

6969 Black  
3-PACK  
35/38, 39/42, 43/46  
72% Cotton, 26% Polyester,  
2% Elastane



**730003  
SNEAKER  
NOS**

7000 Grey/Anthracite/Black  
3-PACK  
35/38, 39/42, 43/46  
72% Cotton, 26% Polyester,  
2% Elastane



**730013  
SNEAKER  
SEASON**

7018 Balsam Green/Grey Mel/Black  
3-PACK  
35/38, 39/42, 43/46  
72% Cotton, 26% Polyester,  
2% Elastane



**730013  
SNEAKER  
SEASON**

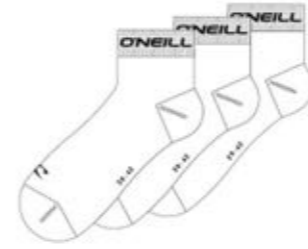
7019 Harbor Blue/Orange/Black  
3-PACK  
35/38, 39/42, 43/46  
72% Cotton, 26% Polyester,  
2% Elastane



**730013  
SNEAKER  
SEASON**

7020 Aqua Sea/Lime/Fuchsia  
3-PACK  
35/38, 39/42, 43/46  
72% Cotton, 26% Polyester,  
2% Elastane





**750003  
QUARTER  
NOS**

1010 White  
3-PACK  
35/38, 39/42, 43/46  
72% Cotton, 26% Polyester,  
2% Elastane



**750003  
QUARTER  
NOS**

6969 Black  
3-PACK  
35/38, 39/42, 43/46  
72% Cotton, 26% Polyester,  
2% Elastane



**750013  
QUARTER PLAIN  
SEASON**

7019 Orange/Harbor Blue/Black  
3-PACK  
35/38, 39/42, 43/46  
72% Cotton, 26% Polyester,  
2% Elastane

**750013  
QUARTER PLAIN  
SEASON**

7020 Balsam Green/Yellow/Black  
3-PACK  
35/38, 39/42, 43/46  
72% Cotton, 26% Polyester,  
2% Elastane

**750013  
QUARTER PLAIN  
SEASON**

7021 Marine/Red/Dark Grey Mel  
3-PACK  
35/38, 39/42, 43/46  
72% Cotton, 26% Polyester,  
2% Elastane



**770003  
SPORTSOCK  
NOS**

1010 White  
3-PACK  
35/38, 39/42, 43/46  
67% Cotton, 31% Polyester,  
2% Elastane



**770003  
SPORTSOCK  
NOS**

4949 Marine  
3-PACK  
35/38, 39/42, 43/46  
67% Cotton, 31% Polyester,  
2% Elastane



**770003  
SPORTSOCK  
NOS**

6868 Anthracite  
3-PACK  
35/38, 39/42, 43/46  
67% Cotton, 31% Polyester,  
2% Elastane



**770003  
SPORTSOCK  
NOS**

6969 Black  
3-PACK  
35/38, 39/42, 43/46  
67% Cotton, 31% Polyester,  
2% Elastane

THE ORIGINAL CALIFORNIA LIFESTYLE



CONTACT

+31 (0)73-6496666

[WWW.SOCKSHOUSE.COM](http://WWW.SOCKSHOUSE.COM)